



# **CORINNE RUSSELL JUDKINS TRUSTS**



The Corinne Russell Judkins Trusts seeks mineral and/or off-set well drilling commitments.

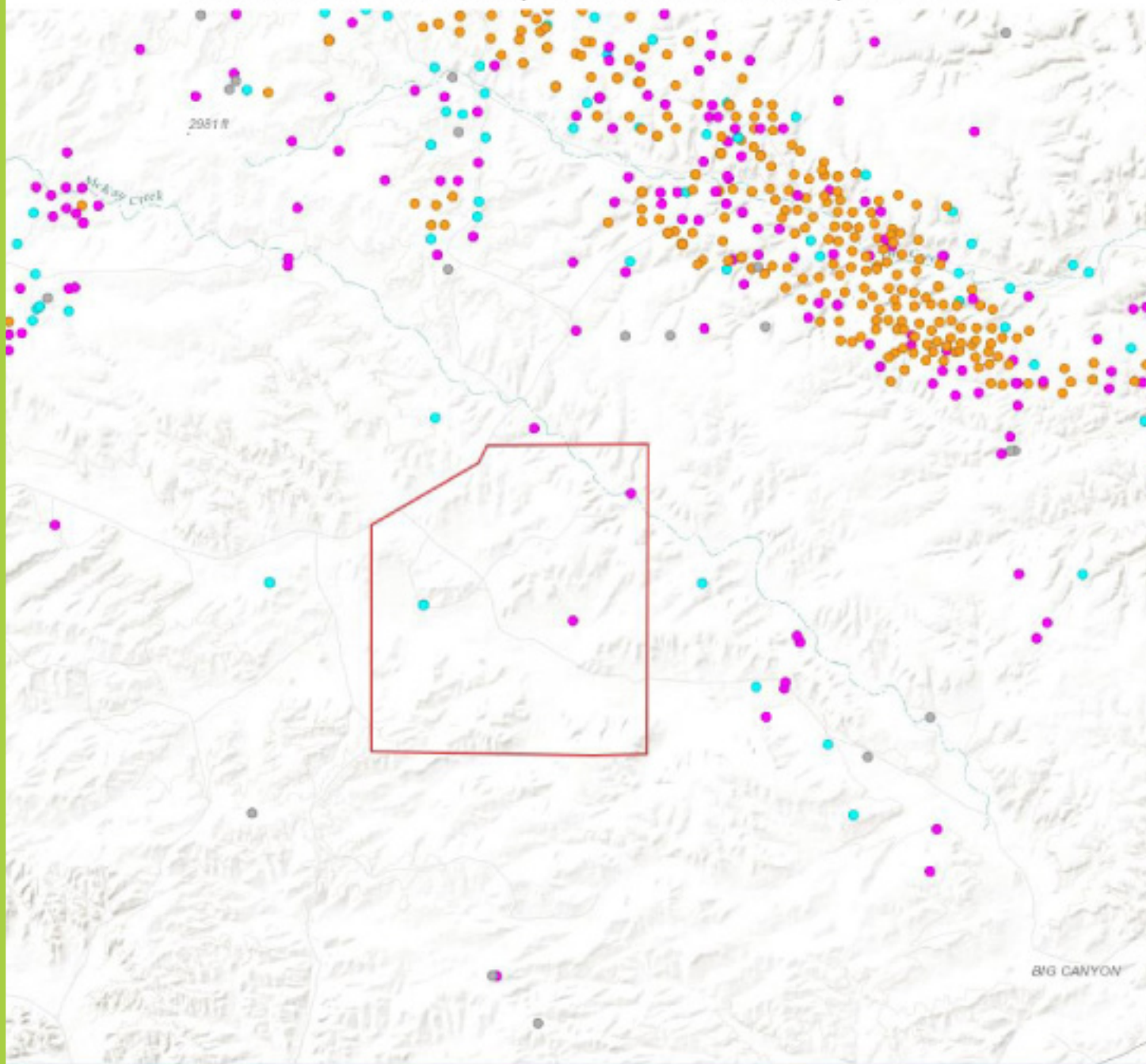
The trust owns full mineral rights and/or has the executive rights of the extensive mineral rights listed under the respective Texas counties of Terrell and Schleicher in close proximity to significant producing fields.

These properties are part of the original Richard Robertson Russell ranches, which were assembled over 100 years ago and have remained in the family.

New trustees representing their respective family have replaced the former trustee of the Trusts, US Trust/Bank of America.



# CIRCLE DOT RANCH, TERRELL COUNTY, TEXAS



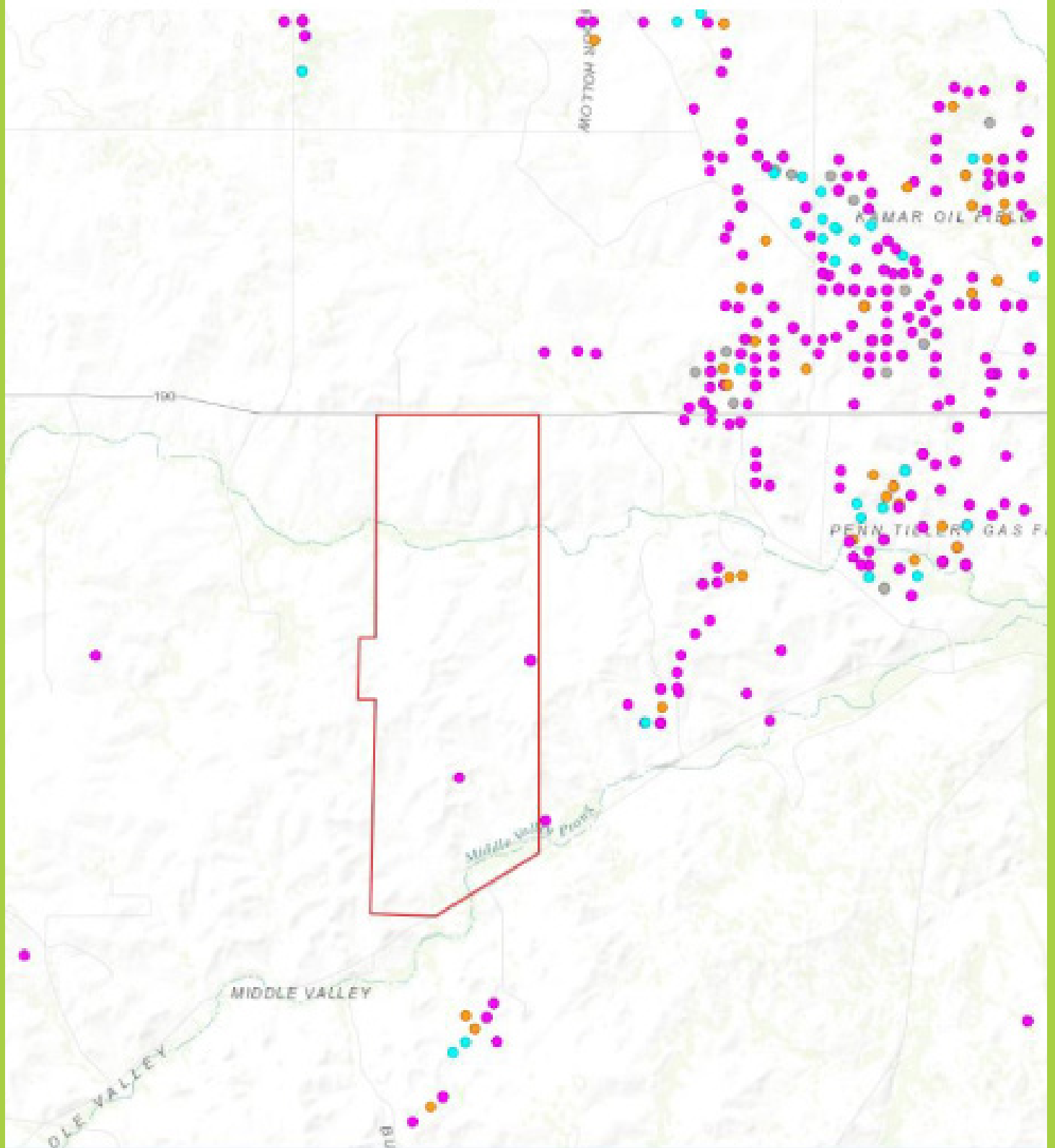


# CIRCLE DOT-TERRELL, TEXAS

County	Surface Inter	Net Surface Ac	Mineral Inter	Gross Acr	Net Acres	Survey	Description	Section	Block	Abstract
Terrell	100%	648.40	100%	648,400	648.400	Corpus Christi-San Diego & Rio Grande Narrow Gauge RR Co.	All	67	1	118
Terrell	100%	324.40	100%	324,400	324.400	Corpus Christi-San Diego & Rio Grande Narrow Gauge RR Co.	E/2	75	1	122
Terrell	100%	324.00	100%	324,000	324.000	Corpus Christi-San Diego & Rio Grande Narrow Gauge RR Co.	E/2	77	1	123
Terrell	100%	320.00	100%	320,000	320.000	Corpus Christi-San Diego & Rio Grande Narrow Gauge RR Co.	N/2	101	1	135
Terrell	100%	648.60	100%	648,600	648.600	Corpus Christi-San Diego & Rio Grande Narrow Gauge RR Co.	All	66	1	1853
Terrell	100%	674.90	100%	674,900	674.900	Corpus Christi-San Diego & Rio Grande Narrow Gauge RR Co.	All	65	1	117
Terrell	100%	615.18	100%	615,180	615.180	Corpus Christi-San Diego & Rio Grande Narrow Gauge RR Co.	that portion lying SE of FM2	53	1	111
Terrell	100%	648.60	100%	648,600	648.600	Corpus Christi-San Diego & Rio Grande Narrow Gauge RR Co.	All	51	1	110
Terrell	100%	648.40	100%	648,400	648.400	Corpus Christi-San Diego & Rio Grande Narrow Gauge RR Co.	All	49	1	109
Terrell	100%	648.60	100%	648,600	648.600	Corpus Christi-San Diego & Rio Grande Narrow Gauge RR Co.	All	41	1	105
Terrell	100%	674.90	100%	674,900	674.900	Corpus Christi-San Diego & Rio Grande Narrow Gauge RR Co.	All	39	1	104
Terrell	100%	675.40	100%	675,400	675.400	Corpus Christi-San Diego & Rio Grande Narrow Gauge RR Co.	All	27	1	98
Terrell	100%	648.60	100%	648,600	648.600	Corpus Christi-San Diego & Rio Grande Narrow Gauge RR Co.	All	25	1	97
Terrell	100%	649.00	100%	649,000	649.000	Corpus Christi-San Diego & Rio Grande Narrow Gauge RR Co.	All	23	1	96
Terrell	100%	640.00	100%	640,000	640.000	Corpus Christi-San Diego & Rio Grande Narrow Gauge RR Co.	All	57	3	179
Terrell	100%	640.00	100%	640,000	640.000	Corpus Christi-San Diego & Rio Grande Narrow Gauge RR Co.	All	29	3	173
Terrell	100%	640.00	100%	640,000	640.000	Corpus Christi-San Diego & Rio Grande Narrow Gauge RR Co.	All	167	1	167
Terrell	0%	0.00	50%	651,900	325.950	Corpus Christi-San Diego & Rio Grande Narrow Gauge RR Co.	All	119	1	144
Terrell	0%	0.00	50%	685,200	342.600	Corpus Christi-San Diego & Rio Grande Narrow Gauge RR Co.	All	117	1	143
Terrell	0%	0.00	50%	685,000	342.500	Corpus Christi-San Diego & Rio Grande Narrow Gauge RR Co.	All	105	1	137
Terrell	0%	0.00	50%	682,400	341.200	Corpus Christi-San Diego & Rio Grande Narrow Gauge RR Co.	All	104	1	1665
Terrell	0%	0.00	50%	651,900	325.950	Corpus Christi-San Diego & Rio Grande Narrow Gauge RR Co.	All	103	1	136
Terrell	0%	0.00	50%	651,900	325.950	Corpus Christi-San Diego & Rio Grande Narrow Gauge RR Co.	All	93	1	131
Terrell	0%	0.00	50%	674,900	337.450	Corpus Christi-San Diego & Rio Grande Narrow Gauge RR Co.	All	91	1	130
Terrell	0%	0.00	50%	641,290	320.645	Corpus Christi-San Diego & Rio Grande Narrow Gauge RR Co.	that portion lying north of F	79	1	124
Terrell	0%	0.00	50%	324,400	162.200	Corpus Christi-San Diego & Rio Grande Narrow Gauge RR Co.	W/2	77	1	123
Terrell	0%	0.00	50%	324,200	162.100	Corpus Christi-San Diego & Rio Grande Narrow Gauge RR Co.	W/2	75	1	122
Terrell	0%	0.00	50%	66,650	33.325	Corpus Christi-San Diego & Rio Grande Narrow Gauge RR Co.	NW part of section being all of section lying Nwerly of FM 2400	53	1	111
Terrell	0%	0.00	50%	641,200	320.600	Corpus Christi-San Diego & Rio Grande Narrow Gauge RR Co.	All	116	3	51
Terrell	0%	0.00	50%	641,200	320.600	Corpus Christi-San Diego & Rio Grande Narrow Gauge RR Co.	All	115	3	192
Terrell	0%	0.00	50%	641,500	320.750	Corpus Christi-San Diego & Rio Grande Narrow Gauge RR Co.	All	114	3	1606
Terrell	0%	0.00	50%	641,300	320.650	Corpus Christi-San Diego & Rio Grande Narrow Gauge RR Co.	All	113	3	191
Terrell	0%	0.00	50%	641,000	320.500	Corpus Christi-San Diego & Rio Grande Narrow Gauge RR Co.	All	112	3	1603
Terrell	0%	0.00	50%	641,000	320.500	Corpus Christi-San Diego & Rio Grande Narrow Gauge RR Co.	All	111	3	190
Terrell	0%	0.00	50%	641,000	320.500	Corpus Christi-San Diego & Rio Grande Narrow Gauge RR Co.	All	87	3	186
Terrell	0%	0.00	50%	641,300	320.650	Corpus Christi-San Diego & Rio Grande Narrow Gauge RR Co.	All	85	3	185
Terrell	0%	0.00	50%	641,000	320.500	Corpus Christi-San Diego & Rio Grande Narrow Gauge RR Co.	All	83	3	184
Terrell	0%	0.00	50%	641,000	320.500	Corpus Christi-San Diego & Rio Grande Narrow Gauge RR Co.	All	59	3	180
Terrell	100%	648.60	0%	648,600	324.300	Corpus Christi-San Diego & Rio Grande Narrow Gauge RR Co.	All	24	1	1854
Terrell	100%	674.800	0%	674,800	337.400	Corpus Christi-San Diego & Rio Grande Narrow Gauge RR Co.	All	26	1	2353
Terrell	100%	676.40	0%	676,400	338.200	Corpus Christi-San Diego & Rio Grande Narrow Gauge RR Co.	All	38	1	2202
Terrell	100%	648.60	0%	648,600	324.300	Corpus Christi-San Diego & Rio Grande Narrow Gauge RR Co.	All	40	1	1891
Terrell	100%	648.400	0%	648,400	324.200	Corpus Christi-San Diego & Rio Grande Narrow Gauge RR Co.	All	42	1	1892
Terrell	100%	648.60	0%	648,600	324.300	Corpus Christi-San Diego & Rio Grande Narrow Gauge RR Co.	All	50	1	1890
Terrell	100%	674.80	0%	674,800	337.400	Corpus Christi-San Diego & Rio Grande Narrow Gauge RR Co.	All	52	1	1894
Terrell	100%	222.78	0%	222,780	111.390	Corpus Christi-San Diego & Rio Grande Narrow Gauge RR Co.	that portion lying south of FM 2400	64	1	1927
Terrell	100%	648.40	0%	648,400	324.200	Corpus Christi-San Diego & Rio Grande Narrow Gauge RR Co.	All	68	1	2005
Terrell	100%	324.30	0%	324,300	162.150	Corpus Christi-San Diego & Rio Grande Narrow Gauge RR Co.	E/2	76	1	1929
Terrell	100%	303.51	0%	303,510	151.755	Corpus Christi-San Diego & Rio Grande Narrow Gauge RR Co.	portion lying south of fm 2400 like that position conveyed to walter m. mischer, see file for metes & bounds	78	1	1895

\*NOTE: In mineral-classified (aka Relinquishment Act) lands, the State of Texas owns 100% of the mineral estate. In exchange for the surface owner (aka "owner of the soil") negotiating oil & gas leases on behalf of the State, the State allows the surface owner to retain 1/2 of any bonuses and 1/2 of any royalties paid. Technically, then, the surface owner does not own any of the minerals. For the purposes of this spreadsheet, however, I have treated the numbers in the column

## FIGURE THREE RANCH, SCHLEICHER COUNTY, TEXAS





# FIGURE 3 - SCHLEICHER, TX

County	Surface Inter	Net Surface Ac	Mineral Inter	Gross Acr	Net Acre	Survey	Description	Section	Block	Abstract	Notes:
Schleicher	100%	369.70	100%	369.70	369.70	J.H. Gibson	East Part	31	1	985	
Schleicher	100%	640.00	100%	640.00	640.00	J.H. Gibson	All	46	A	987	
Schleicher	100%	430.30	100%	430.30	430.30	Arnold & Barrett	East Part	34	A	1535	
Schleicher	100%	320.00	100%	320.00	320.00	Adams, Beaty, & Mo	E/2	18	A	1664	
Schleicher	100%	640.00	100%	640.00	640.00	Adams, Beaty, & Mo	All	16	A	1665	
Schleicher	100%	640.00	100%	640.00	640.00	Adams, Beaty, & Mo	All	14	A	1666	
Schleicher	100%	640.00	100%	640.00	640.00	J.H. Gibson	All	44	A	1668	
Schleicher	100%	640.00	100%	640.00	640.00	J.H. Gibson	All	54	A	1669	
Schleicher	100%	18.10	100%	18.10	18.10	C.R. Judkins	All	3	A	1992	
Schleicher	100%	640.00	100%	640.00	640.00	J.H. Gibson	All	43	A	79	
Schleicher	100%	320.00	100%	320.00	320.00	J.H. Gibson	E/2	45	A	80	
Schleicher	100%	320.00	100%	320.00	320.00	J.H. Gibson	E/2	53	A	84	
Schleicher	100%	320.00	100%	320.00	320.00	J.H. Gibson	portion lying north of the h	55	A	85	
Schleicher	100%	369.20	100%	369.20	369.20	Hooper & Wade	East Part	9		481	
Schleicher	100%	640.00	100%	640.00	640.00	Beaty, Seale & Forw	All	30	A	981	
Schleicher	100%	640.00	100%	640.00	640.00	Beaty, Seale & Forw	All	32	A	984	
Schleicher	100%	640.00	100%	640.00	640.00	Arnold & Barrett	All	33	A	4	
Schleicher	100%	320.00	100%	320.00	320.00	Arnold & Barrett	E/2	35	A	5	
Schleicher	100%	640.00	100%	640.00	640.00	Adams, Beaty, & Mo	All	13	A	18	
Schleicher	100%	640.00	100%	640.00	640.00	Adams, Beaty, & Mo	All	15	A	19	
Schleicher	100%	320.00	100%	320.00	320.00	Adams, Beaty, & Mo	E/2	17	A	20	
Schleicher	100%	152.00	100%	152.00	152.00	W.A. Binnion	All	16	V-14	32	
Schleicher	100%	640.00	100%	640.00	640.00	Beaty, Seale & Forw	All	31	A	35	
Schleicher	100%	640.00	100%	640.00	640.00	J.H. Gibson	All	41	A	76	



# CONTACT US

For any inquiries, please call or email us:

TERRELL BRALY, CO-TRUSTEE

CORINNE RUSSELL JUDKINS TRUSTS

512-658-9356 | [TERRELL@JUDKINSRANCHES.COM](mailto:TERRELL@JUDKINSRANCHES.COM)

